

Flat Belt Conveyor High Power Type

Center Drive, 3-Groove Frame (Pulley Dia. 30mm)

Dedicated web site <http://fa.misumi.jp/cvs/>
 Conveyor selecting, component purchases, and easy search for maintenance parts are available.

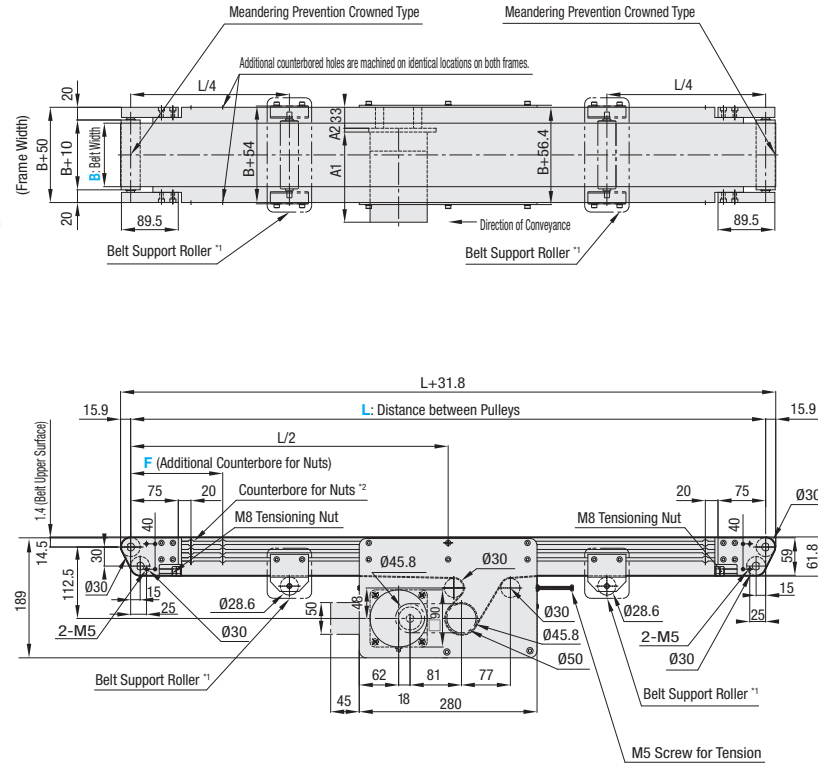
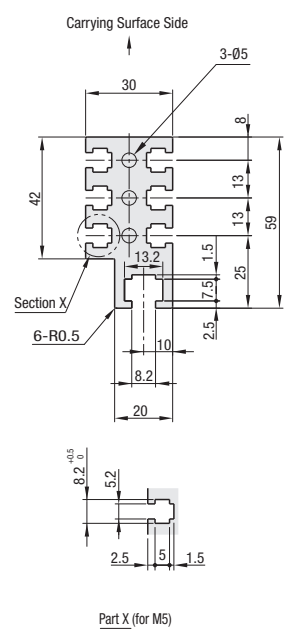
■ **Features:** Up to 90W, Medium distance (up to 6m) transfer suited conveyor. The center drive is suitable for "Conveyor to Conveyor" transfer.



CVSX 60W/90W Motor Type

	Frame	Motor Cover	Pulley Holder
M Material	Aluminum	Steel	EN 1.0038 Equiv.
S Surface Treatment	Clear Anodize	Paint	Paint

Frame Cross Section and Enlarged View (Symmetrical)



*1 When $L \geq 4005$, belt support rollers are mounted in the diagram locations. The layout is as shown in the diagram at the time of shipping but the drive section and belt support rollers can be moved.
 *2 When $L \leq 525$, there will be no counterbored hole for nuts. However, each slot has 4 pre-inserted nuts provided.

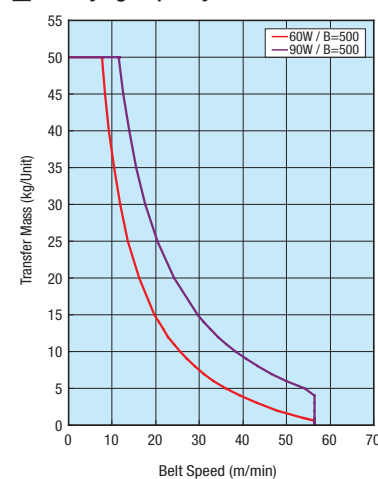
☑ Compatible with JIS standard hex nuts.

☑ The dimensions in the diagram is for Belt Specifications H (0.9mm THK.). Take note that belt thickness varies by Belt Specifications. For Belt Specifications, see P.1279~.

* A Dimension Details

Output (W)	Motor		Reduction Ratio	A1	A2
	Specification	Manufacturer			
60W	Induction Motor	Panasonic	5~180	180.0	6
		Oriental	5~180	185.0	
	Variable Speed Motor	Panasonic	5~180	210.0	
		Oriental	5~180	215.0	
90W	Induction Motor	Panasonic	5~180	195.0	6
		Oriental	5~180	200.0	
	Variable Speed Motor	Panasonic	5~180	232.0	
		Oriental	5~180	230.0	

Conveying Capacity



*Reference Value may differ by selected Belt.

Gearhead Reduction Ratio

*May decrease depending on load condition.

Gearhead Reduction Ratio	Belt Speed (m/min)	
	50Hz	60Hz
5	47.1	56.5
7.5	31.4	37.7
9	26.2	31.4
12.5	18.8	22.6
15	15.7	18.8
18	13.1	15.7
25	9.4	11.3
30	7.9	9.4
36	6.5	7.9
50	4.7	5.7
60	3.9	4.7
75	3.1	3.8
90	2.6	3.1
100	2.4	2.8
120	2.0	2.4
150	1.6	1.9
180	1.3	1.6

Part Number	B Selection	L 5mm Increment	Output (W)	Motor			Belt Specification	F (Additional Counterbores) 5mm Increment	Motor Manufacturer Selection
				Voltage (V)	Specification	Gearhead Reduction Ratio			
CVSX	100 200 300 400 500	480-6000	60 90	TA230 (Single-phase)	IM (Induction Motor) SCM (Variable Speed Motor)	5 7.5 9 12.5 15 18 25 30 36 50 60 75 90 100 120 150 180	H (General Purpose, Green) W (General Purpose, White) G (For Sliding, Green) S (For Sliding, White) D (For Electronic Parts Transfer) F (For Food Transfer) O (Oil Resistant) N (Non-adhesive) J (No Belt)	105 <math>F < L - 105</math> *When not specified, there will be no additional counterbores.	A (Panasonic Motor) B (Oriental Motor)
				NV (No Motor)	NM (No Motor)	NH (No Gearhead)	*For belts other than the above, select from Belt Specification below.	R (No Motor, Gearhead)	

- ☑ Connect the motor so that the belt rotates in the direction of conveyance. For connection diagram, and details of motor and inverter, see P.1267 onward.
- ☑ When $L \geq 2005$, customers are to assemble.
- ☑ Workpiece weighing over 10kg/unit might deform belt base plate.
- ☑ When the unit length (L dim.) is 2000mm or less, this will be delivered complete. For a unit over 2000mm, the frame is delivered in sections and the customer is to assemble according to the included assembly instructions. The assembly procedure manual can also be downloaded from our Conveyor Selection web site.
- ☑ When "No motor, gearhead" is selected, the motor mounting hole pitch will vary depending on the motor's power rating. Please see Technical Information in our Conveyor Selection web site for the dimension details.
- ☑ When "No motor, gearhead" is selected, this unit will be delivered unassembled. The customer is to assemble the unit according to the included assembly instructions. See our Conveyor Selection site for assembly procedures and packaging details.

Belt Specification	Standard Belt (Body Price Only)	Optional Belt 1	Optional Belt 2	No Belt
General Purpose	H (Green), W (White), HG (Green)	-	HY (Yellow Green), HBN (Sky Blue)	J (No Belt)
For Sliding	G (Green), S (White)	-	-	
For Inclined Transfer	LG (Green), LW (White)	-	-	
Grip Type	-	GG (Green), GW (White)	GSN (Green)	
Oil Resistant	O (Navy Blue), OH (Green), OG (Green)	OW (White)	ON (White)	
Non-adhesive	N (White), NS (White)	NB (Sky Blue), NBG (Lime Green), HH (Green), HW (White)	NWN (White), NSN (Sky Blue), NGN (Lime Green), HBG (Green), HBW (White), BW (White)	
For Food Transfer	F (White)	KW (White), KSB (Sky Blue), PHB (Sky Blue)	PHN (Sky Blue), PWN (Sky Blue), KWN (White)	
For Electronic Parts Transfer	D (Black), DS (Black)	-	DG (Black)	

☑ For flat belt details, see P.1279 onward.
 ☑ In case of selecting Optional Belts, please select motor manufacturer A or B (Motor C is applicable for Standard Belt only).

Part Number	B	Body Price 1 - 2 pc(s).																							
		L480-600	L605-800	L805-1000	L1005-1200	L1205-1400	L1405-1600	L1605-1800	L1805-2000	L2005-2200	L2205-2400	L2405-2600	L2605-2800	L2805-3000	L3005-3250	L3255-3500	L3505-3750	L3755-4000	L4005-4250	L4255-4500	L4505-5000	L5005-5500	L5505-6000		
CVSX	100	-	-	-	-	-	-	-	-	-	-	-	-	-	-	-	-	-	-	-	-	-	-	-	-
	200	-	-	-	-	-	-	-	-	-	-	-	-	-	-	-	-	-	-	-	-	-	-	-	-
	300	-	-	-	-	-	-	-	-	-	-	-	-	-	-	-	-	-	-	-	-	-	-	-	-
	400	-	-	-	-	-	-	-	-	-	-	-	-	-	-	-	-	-	-	-	-	-	-	-	-
	500	-	-	-	-	-	-	-	-	-	-	-	-	-	-	-	-	-	-	-	-	-	-	-	-

Motor Spec. Price	Motor Output	Specification	A (Panasonic Motor)	B (Oriental Motor)	R (No Motor, Gearhead)
			60W	IM	
90W	SCM				

Belt Spec. Price	Standard Belt	Optional Belt 1	Optional Belt 2	No Belt



Ordering Example: **Part Number** - B - L - **Motor** - Output - Voltage - Specification - Gearhead Reduction Ratio - Belt Specification - F - **Motor Manufacturer Selection**

CVSX - 300 - 2000 - 90 - TA230 - IM - 25 - H - F1000 - A

Ex.) For No Belt: CVSX-100-1000-60-TA230-SCM-25-J-F300-A
 Ex.) For Optional Belt 2: CVSX-100-1000-60-TA230-SCM-25-HY-F300-B
 Ex.) For No Motor, Gearhead: CVSX-100-1000-60-NV-NM-NH-H-F300-R

→ Body Price + Motor, Belt Spec. Price = Unit Price



Alterations: Specify Drive Section Position
 Brackets for Speed Controller Included
 Post-Assembly Insertion Nuts Included
 Motors with Electromagnetic Brake Stands (Legs)
 For details of alterations, see P.1264 onward.